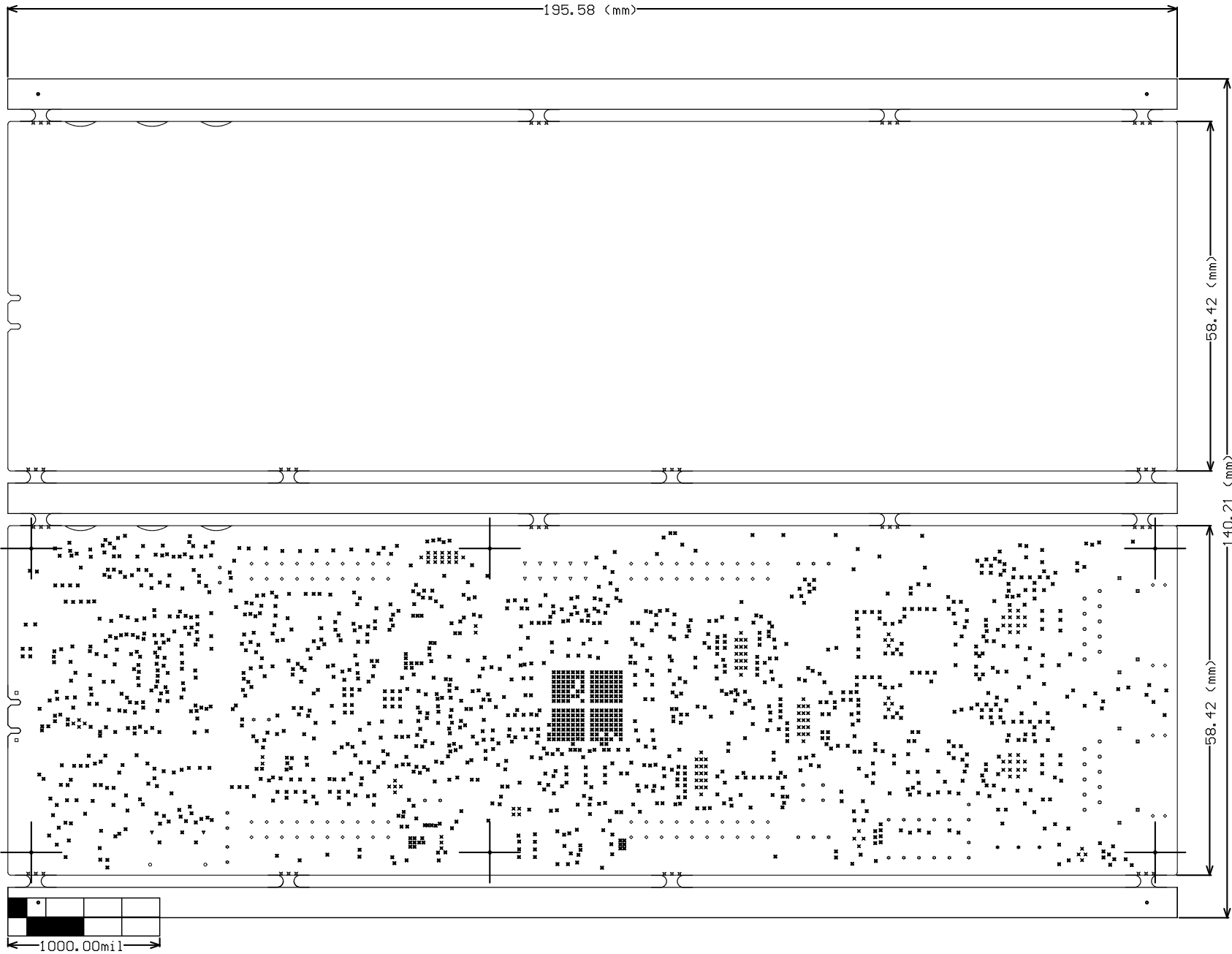


IMPEDANCE SPECIFICATIONS

LAYERS	IMPEDANCE (50 Ohms) WIDTH	IMPEDANCE(90 Ohms)		IMPEDANCE(100 Ohms)		REFERENCE LAYER
		WIDTH	SPACE	WIDTH	SPACE	
TOP	5.3 MIL	4.2 MIL	5 MIL	4 MIL	7.7 MIL	L2
SIG1	4 MIL	4 MIL	6 MIL	3.5 MIL	8.1 MIL	L2
BOTTOM	5.3 MIL	4.2 MIL	5 MIL	4 MIL	7.7 MIL	L5

Symbol	Count	Hole Size	Plated	Hole Type	Drill Layer Pair	Hole Tolerance (+)	Hole Tolerance (-)
⌘	128	7.87mil (0.200mm)	PTH	Round	Top Layer - Bottom Layer	3.00mil (0.076mm)	3.00mil (0.076mm)
⌘	1606	8.00mil (0.203mm)	PTH	Round	Top Layer - Bottom Layer	3.00mil (0.076mm)	3.00mil (0.076mm)
□	2	23.62mil (0.600mm)	PTH	Slot	Top Layer - Bottom Layer	3.00mil (0.076mm)	3.00mil (0.076mm)
⌘	48	32.00mil (0.813mm)	NPTH	Round	Top Layer - Bottom Layer	3.00mil (0.076mm)	3.00mil (0.076mm)
⊙	20	35.43mil (0.900mm)	PTH	Round	Top Layer - Bottom Layer	3.00mil (0.076mm)	3.00mil (0.076mm)
▽	10	39.37mil (1.000mm)	PTH	Round	Top Layer - Bottom Layer	3.00mil (0.076mm)	3.00mil (0.076mm)
☆	34	40.00mil (1.016mm)	PTH	Round	Top Layer - Bottom Layer	3.00mil (0.076mm)	3.00mil (0.076mm)
◇	98	40.16mil (1.020mm)	PTH	Round	Top Layer - Bottom Layer	3.00mil (0.076mm)	3.00mil (0.076mm)
★	3	47.24mil (1.200mm)	PTH	Round	Top Layer - Bottom Layer	3.00mil (0.076mm)	3.00mil (0.076mm)
▼	2	62.99mil (1.600mm)	PTH	Slot	Top Layer - Bottom Layer	3.00mil (0.076mm)	3.00mil (0.076mm)
⌘	4	66.93mil (1.700mm)	PTH	Round	Top Layer - Bottom Layer	3.00mil (0.076mm)	3.00mil (0.076mm)
⊙	2	82.68mil (2.100mm)	PTH	Slot	Top Layer - Bottom Layer	3.00mil (0.076mm)	3.00mil (0.076mm)
⊙	10	126.00mil (3.200mm)	NPTH	Round	Top Layer - Bottom Layer	3.00mil (0.076mm)	3.00mil (0.076mm)
⊙	4	127.95mil (3.250mm)	NPTH	Round	Top Layer - Bottom Layer	3.00mil (0.076mm)	3.00mil (0.076mm)
⊙	1961 Total						

Slot definitions : Routed Path Length = Calculated from tool start centre position to tool end centre position.
Hole Length = Routed Path Length + Tool Size = Slot length as defined in the PCB layout



Layer	Name	Material	Thickness	Constant
	Top Overlay			
	Top Solder	Taiyo PSR 4000 HFX DI-GREEN	1.00mil	3.5
1	Top Layer	Copper Foil 18 microns	2.09mil	
	Dielectric 1	Iteq IT180A Prepreg 2113 RC58	3.51mil	4.13
2	GND 1		1.26mil	
	Dielectric 3	Iteq IT180A 4 mil core 1/1	4.00mil	4.4
3	SIG 1		1.26mil	
	Dielectric 5	Composite dielectric	1.75mil	3.79
	Dielectric 6	Composite dielectric	2.66mil	3.86
	Dielectric1	Iteq IT180A 28 mil core H/H	28.00mil	4.53
	Dielectric 7	Composite dielectric	2.66mil	3.86
	Dielectric 8	Composite dielectric	1.75mil	3.79
4	SIG 2		1.26mil	
	Dielectric 4	Iteq IT180A 4 mil core 1/1	4.00mil	4.4
5	GND 2		1.26mil	
	Dielectric 2	Iteq IT180A Prepreg 2113 RC58	3.51mil	4.13
6	Bottom Layer	Copper Foil 18 microns	2.09mil	
	Bottom Solder	Taiyo PSR 4000 HFX DI-GREEN	1.00mil	3.5
	Bottom Overlay			

DESIGN INFORMATION

MIN. TRACK WIDTH: 3.4 MIL
MIN. CLEARANCE: 3.2 MIL
MIN. VIA PAD SIZE: 18 MIL
MINIMUM ANNULAR RING 0.05mm (2MIL) EXTERNAL
PER IPC-D-275 CLASS 2 LEVEL C
REGISTRATION TOLERANCES: METAL +/- 5 MIL, HOLES +/- 3 MIL
HOLE SIZE TOLERANCE (UNLESS OTHERWISE SPECIFIED): +/- 3 MIL

MATERIAL:
☐ FR-408 ☒ FR-4 High Tg ☐ OTHER
THICKNESS: ☒ 62 MIL (1.6mm) +/-10% ☐ OTHER
TOLERANCE: ☒ ANSI IPC-6012 TYPE 3 CLASS 2
☐ OTHER +/-
BOW & TWIST: ☒ ANSI IPC-6012 TYPE 3 CLASS 2
☐ OTHER +/-

DRILLING:
REFERENCE: ☒ AS SHOWN ☒ NC_DRILL FILES
PTH COPPER THICKNESS: ☒ 20-30 um ☐ OTHER
BOARD FINISH:
SILKSCREEN: ☒ TOP ☒ BOTTOM
SILKSCREEN COLOR: ☒ WHITE ☐ OTHER
SOLDER RESIST COLOR: ☐ GREEN ☒ OTHER RED
☒ MATTE ☐ SEMI-GLOSS

SURFACE FINISH: ☒ IMMERSION GOLD (ENIG) ☐ ENEPIG
☐ IMM. TIN/SILVER OR EQUIV ☐ OTHER
ARRAY/PANEL: ☐ CUT AND TRIM PER M1 BOARD OUTLINE
☐ N.C. ROUTE ☒ V. SCORE
CERTIFICATION: MATERIALS AND WORKMANSHIP FOR ALL PCBs
TO MEET OR EXCEED THE REQUIREMENTS OF:
☒ ANSI IPC-A-600F CLASS -> ☐ 1 ☒ 2 ☐ 3
☒ RoHS ☐ OTHER PER ORDER

ALL BOARDS MUST MEET OR EXCEED UL94-V0 REQUIREMENTS.
PCB MUST BEAR THE UL94V-0 UL REGISTERED MATERIAL ID NUMBER

ADDITIONAL REQUIREMENTS:
MICROSECTION: ☐ YES
BARE BOARD ELEC. TEST: ☐ NONE ☒ REQUIRED ☐ PER ORDER
☐ XX MIL VIAS REQUIRE NON-CONDUCTIVE FILL AND PLANARIZE
☐ XX MIL VIAS REQUIRE CONDUCTIVE FILL AND PLANARIZE
☐ OUTER XX MIL TRACES REQUIRE 50 OHM SINGLE-ENDED IMPEDANCE
☐ LAYER 2 & 3 (INNER LAYERS) XX MIL WIDE, XX MIL SPACE
TRACES REQUIRE 100 OHM DIFFERENTIAL IMPEDANCE



PROJECT TITLE:
AM263P Launchpad
DESIGNED FOR:
TEXAS INSTRUMENTS
FILE NAME:
PROC171A_PCB.PcbDoc
ENGINEER:
Shrinivas
LAYOUT BY:
MISTRAL
SCALE: 1.00
ALTIUM DESIGNER VERSION:
25.0.2.28

ALL ARTWORK VIEWED FROM TOP SIDE
BOARD #: PROC171 REV: A SUN REV: 126
LAYER NAME = M1 Board Outline
PLOT NAME = Fabrication Drawing
TID #: N/A
GENERATED : 27-05-2025 05:12:02
TEXAS INSTRUMENTS

Texas Instruments (TI) and/or its licensors do not warrant the accuracy or completeness of this specification or any information contained therein. TI and/or its licensors do not warrant that this design will meet the specifications, will be suitable for your application or fit for any particular purpose, or will operate in an implementation. TI and/or its licensors do not warrant that the design is production worthy. You should completely validate and test your design implementation to confirm the system functionality for your application.